

KSB News

Newsletter for KSB's customers and partners in Indonesia



KSB Guard: the smartest step towards digitalizing your plant

KSB Guard is your quick and easy introduction to the world of KSB smart services, an intelligent pump monitoring system comprising sensors and a cloud application which enables you to keep a mobile eye on the performance and status data of your pumps at all times. KSB Guard can be quickly attached to your pumps and immediately helps you to make your system more reliable and reduce your operating costs.

The cloud-based solution monitors all connected pumps in parallel and quickly notifies you of any irregularities. How to detect faults and anomalies faster than ever before while maintaining a solid database for further optimization measures – system-wide. The digitalized recording of performance and status parameters for your pumps offers you a whole new overview of your system – and with it a whole host of benefits.

KSB Guard is a smart monitoring device for comprehensive monitoring of your pumps with maximum availability, transparency and security guaranteed, also applied for non-KSB pumps. No need to be on site for 24 hours a day, 7 days a week.

Feel free to get in touch with our SupremeServ team:
https://bit.ly/KSB_Kontak

02 | 21 Contents

Management's note	02
KSB SupremeServ: AMC	02
KSB valves for Petrochemical/Chemical	03
Success story SPAM Lampung	04
Product feature Boiler feed pump	06
News, quiz & feedback	08

Follow KSB Indonesia





Management's note

Welcome to the last edition of 2021's KSB News that provides exciting news and valuable insight regarding our best-in-class product portfolio and solution offer which is specially presented to you, our valuable customers and partners.

We are proud to support one of national strategic projects (PSN/Proyek Strategis Nasional) in Bandar Lampung, Sumatra, by supplying a total of 25 pumps and a total of 321 unit of valves. We are delighted to share about the flexible, durable and reliable KSB boiler feed pump on this edition.

This year marks 150 years of KSB in the business of designing and manufacturing industry leading product. Together let's build a sustainable growth for years to come.

As new year is just around the corner, I wish that each and every one of you will have a great start into a wonderful year of 2022. Through this newsletter may we always stay connected. We surely welcome your feedback and as always, appreciate your support.

Enjoy the reading!

Philippe Olivier
President Director,
PT KSB Indonesia & PT KSB Sales Indonesia

KSB SupremeServ- Annual Maintenance Contract

KSB SupremeServ Indonesia has been officially appointed to manage and execute the Annual Maintenance Contract (AMC) of one of the biggest private storage facilities in Indonesia, an independent petroleum storage facility at the Port of Tanjung Priok with a total of 45 unit pumps (27 unit of KSB pumps and 18 unit of non-KSB pumps).

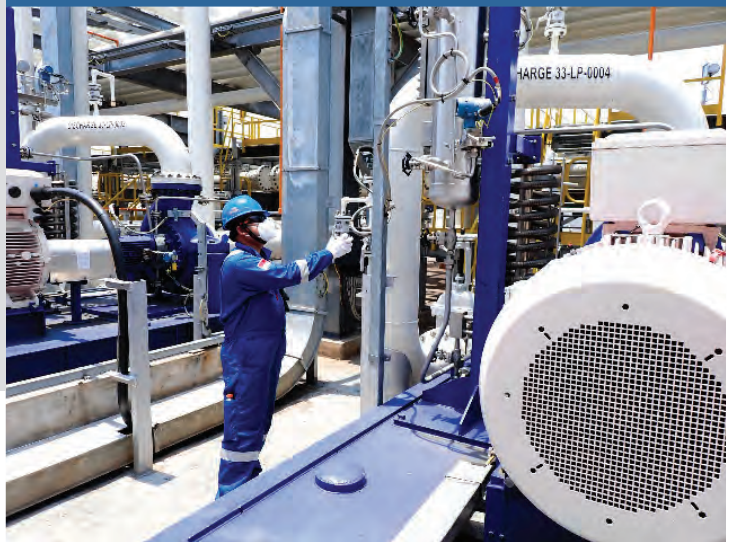
The comprehensive service for 2 years with additional extension for next 2 years including preventive maintenance that includes vibration analysis, pump performance test and monitoring, pump overhaul as well as inspection and recommendation for the spare part stock from our service specialist team.

Contact us:

+62 811 940 2853 (Jakarta)

+62 811 940 2547 (Kalimantan)

Email: IDSupremeServ@ksb.com



KSB valves for the petrochemical and chemical industries

High temperatures, aggressive and flammable fluids – the extreme conditions in the petrochemical and chemical industries require sophisticated and often complex solutions. Thanks to innovative designs and comprehensive service, KSB maximises performance and reliability.

With decades of experience as suppliers to the petrochemical industry as well as in the field of raw materials extraction and processing, KSB delivers all that is needed in tough conditions. KSB products for the oil and gas industry meet the highest global standards of the American Petroleum Institute (API) including API 609 for valves. Robust, safe, efficient and reliable: whenever tough tasks need to be fulfilled for the technical design and performance.

KSB Shutdown valves and block valves Ansi Class 600, size DN 500, with a pneumatic actuator has been installed at a new pipeline project with a length of more than 80 km from Cilacap to Banjar for for a state-owned company engaged in the oil and gas sector in Indonesia following the previous project of pipeline project with a length of more than 150 km from Cilacap to Yogyakarta.

“KSB valves applied on both projects are references for KSB’s next strategic projects as well as strengthening our position in petrochemical and chemical market in Indonesia,” said Chris Antony, Sales Manager Valves for Other Customer Business, KSB in Indonesia. In onshore and offshore extraction, in refineries, intermediate storage and downstream applications – KSB products make sure our natural resources are processed safely and reliably.

Contact us for further detail:
https://bit.ly/KSB_Kontak



KSB supports Bandar Lampung's water supply system

The lack of water infrastructures make a significant number of households in Lampung, Sumatra, have limited access to clean water. The inadequate water supply has evoked the government to initiate a project to supply clean water in Bandar Lampung and sub-districts including Rajabasa, Way Halim, Tanjung Senang, Sukabumi, Labuhan Ratu, Kedaton, Sukarame, and Kedamaian.

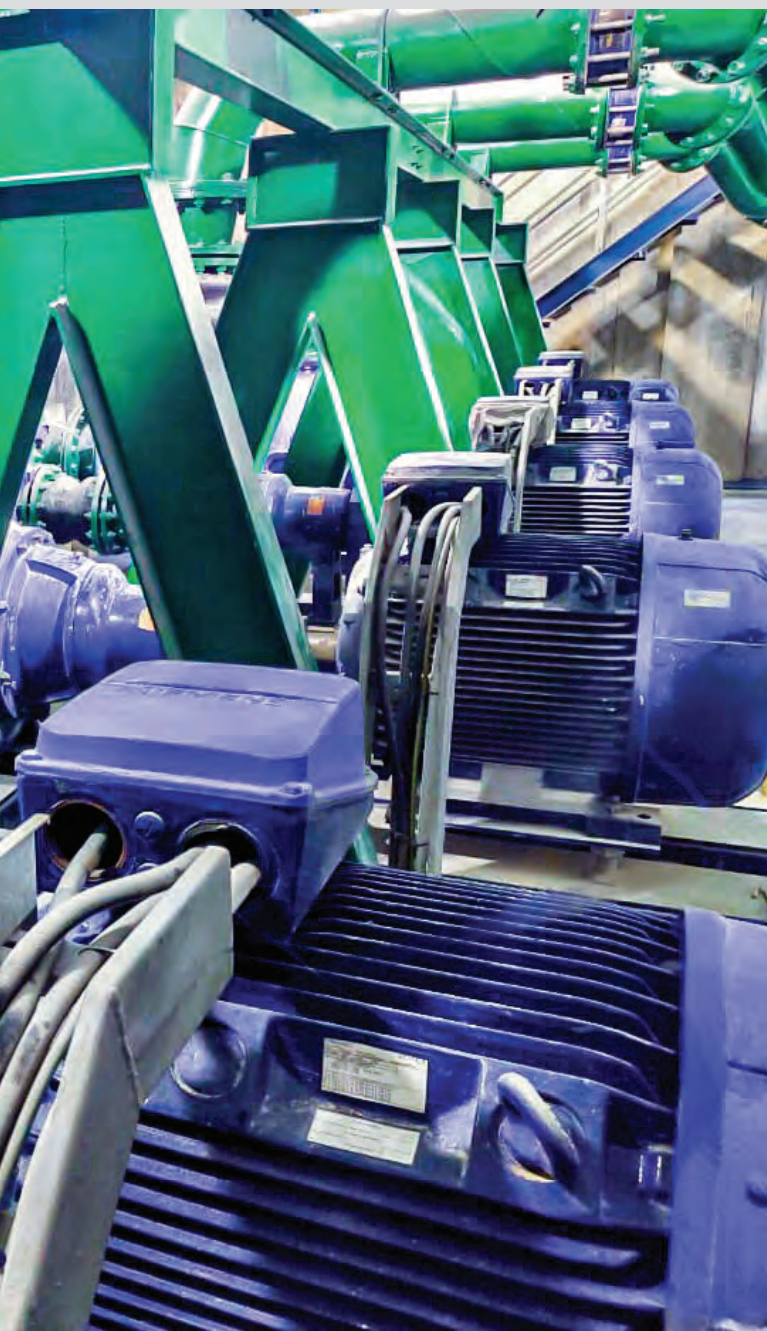
The SPAM (Water supply infrastructure/Water development system/water supply system) Lampung is built to accommodate more clean water for 300,000 Indonesian lives, covering raw water intake with capacity of 825 lps; water treatment plant with production capacity of 750 lps; ± 22 km of 1,000 mm water transmission pipeline; reservoir with capacity of $\pm 10,000$ m³.



The SPAM in Bandar Lampung has been inaugurated in November, 2020. KSB Indonesia is proud to support this project by supplying a total of 25 units of 5 units of Sewatec (capacity: 210 lps, head: 25 m), 6 units of Multitec (capacity: 150 lps, head: 127 m), 5 units of ETN (capacity: 18.05 lps, head: 40 m), 5 units of Etanorm (capacity: 77.22 lps, head: 10 m), and 4 units of KRTK (capacity: 8.47 lps, head: 13 m).

KSB has been chosen to be a part of this project due to its high quality and reliable products as well as the comprehensive solutions offer- A complete package of pumps and valves.

Special transmissions pumps includes the Sewatec and Multitec model with high efficiency and pump optimization while comprehensive valve portfolio with variety of types ideally matched in accordance with customer need and preference.



Multitec with a large choice of available materials and designs ensuring an ideal match for the fluid to be handled and the system the pump will be installed in while Sewatec is designed to operate in a dry environment – no need for a source of clean water to lubricate the pump seals. Additionally, the pump goes the extra mile with redundant seal technology, which adds an extra layer of protection from wastewater getting out of the pump. Both type are flexible, reliable, and cost-efficient.

A total of 321 units of valves consist of air valves, butterfly valves included DN 1000, the largest nominal diameter, dual plate check valves, gate valves, and swing check valves installed on this project, designed to provide long-life reliability, guarantee a safe operation, and deliver a high return-on-investment.

“KSB is extremely thrilled and proud to take part in one of national strategic project and an important water supply infrastructure in Indonesia, that helps Bandar Lampung residents to have more access to clean water,” said Philippe Olivier, President Director, KSB in Indonesia. KSB pumps and valves are perfectly optimized to work with each other. Thus, enable energy-efficient operation and help to reduce the life cycle costs of the system. Supplying fresh, clean water every day: A challenge which KSB handles with competence.

KSB Boiler feed pump – Flexible, Durable, Reliable

KSB's boiler feed pump series offer several hundred combination options in terms of the hydraulic design, which means these pumps can be optimally matched to each individual application.

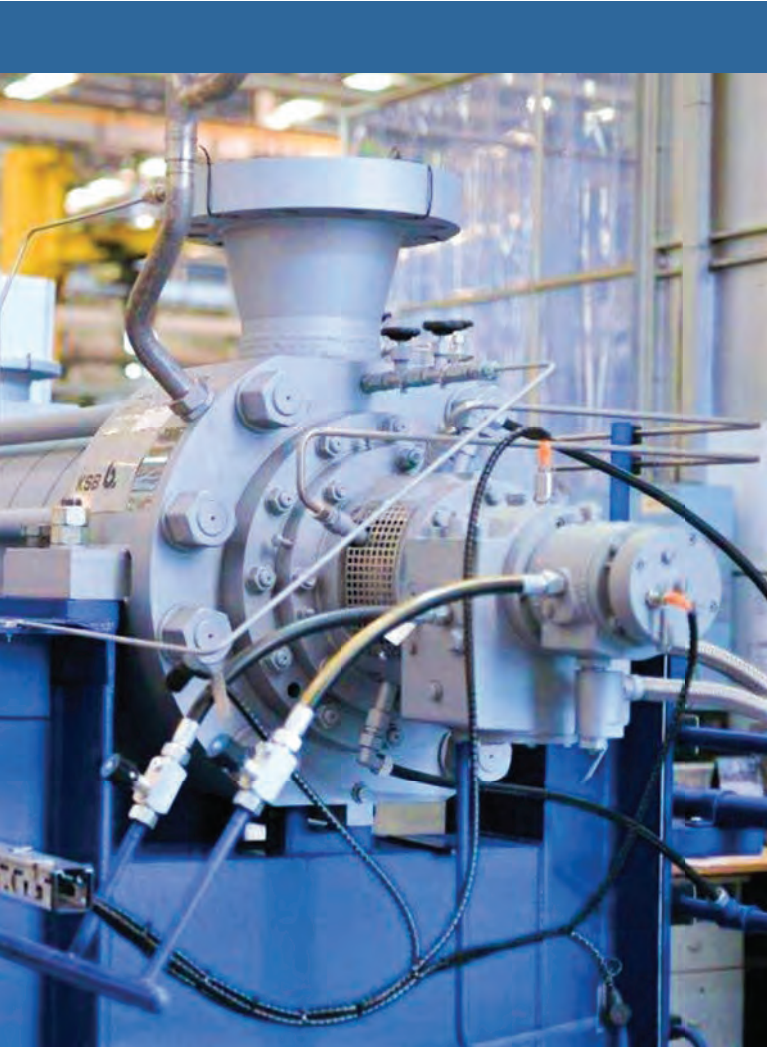
The products of KSB's boiler feed pump series constitute a variable and very flexible modular system. Intelligent matching of the individual components makes for numerous combination options in terms of the hydraulic design.

In order to optimize the efficiency, KSB selects the ideal pump impeller/diffuser combination for each individual application. Together these features give you a product that not only lead the field in quality, efficiency, and reliability, but also keeps your energy and life cycle costs down.

The benefits of applying our boiler feed pumps are including high operating reliability by axial thrust balancing via balance disc and adaptation of pump casing to rotor deflection line, extraction of a partial flow or several partial flows of feed water for use elsewhere in the power station as well as maintenance- friendly design with easy-to-replace wear parts (bearings, sealing elements, balancing devices) and metal-to-metal sealing of casing.

The horizontal radially split ring-section pump with radial impellers, single-entry or double-entry, multistage, HG, applied for handling of feed water transport in power plants, boiler feed applications and condensate transport in industrial applications, pressurized water generation for presses, descaling equipments and many more.





The high-pressure centrifugal pumps by KSB can handle not only high pressures but also high temperatures. Due to a dense coverage of the flow vs head chart with peak efficiency impeller / diffuser geometries, boiler feed pump by KSB always provide highest efficiency for any service requirement.

As part of our commitment in continuous improvement, design development of HGC is an on-going work to increase efficiency and reliability to the optimized level. At KSB Indonesia, we provide local assembly and custom-engineered solution of HGC. We have proven field experience of supplying the boiler feed pumps on power plants in Riau, Bangka, Sulawesi. and Nusa Tenggara.

KSB Centrifugal high-pressure multistage pump with high operating reliability, tapping, ease of service, long service life, reduced energy costs and low capital expenditure, our boiler feed pump, the most suitable pump for your application.

Contact us:

Sales

Tel. +62 21 8088 6509

E-mail: ksbsales@ksb.com

Find out more:

https://bit.ly/KSB_HG





150 years of KSB – People. Passion. Performance.

This year KSB is celebrating its 150th anniversary with the motto “People. Passion. Performance.” as the employees what set KSB apart from the competition as well as the expertise and passion that differentiate KSB from others.

The Frankenthal-based company was founded by Johannes Klein in 1871 together with fellow businessmen

Friedrich Schanzlin and Jakob Becker – hence the name KSB.

Due to the coronavirus pandemic, the anniversary festivities have been postponed until next year. KSB plans to duly celebrate its anniversary year at its locations around the world in September 2022.

Quiz

Please answer the following question and get prizes from KSB News:

Please state total units of KSB pumps as well as KSB valves applied at SPAM Bandar Lampung

Send your answers by February 28, 2022 via e-mail: IDmarcomm@ksb.com including your phone number for gift delivery. Get 5 units of exclusive KSB tumblers along with KSB pens for the first 7 lucky senders.



Feedback

To improve this newsletter continuously, please send your feedback and suggestions to IDmarcomm@ksb.com and get an attractive Polo Shirt and exclusive KSB tumbler for 3 best feedbacks.



KSB News 02 | 2021

Newsletter for KSB's customers and partners in Indonesia

Published by Marketing department, KSB Indonesia.

Secure Building Block B, 3 Floor, Jl. Raya Protokol Halim Perdanakusuma, Jakarta 13610 Indonesia

Tel: +62 21 80886509 E-mail: IDmarcomm@ksb.com

Head office, factory & service, Jl. Timur Blok D2-1 Kawasan Industri MM-2100 Cibitung, 17520

ksb.co.id/